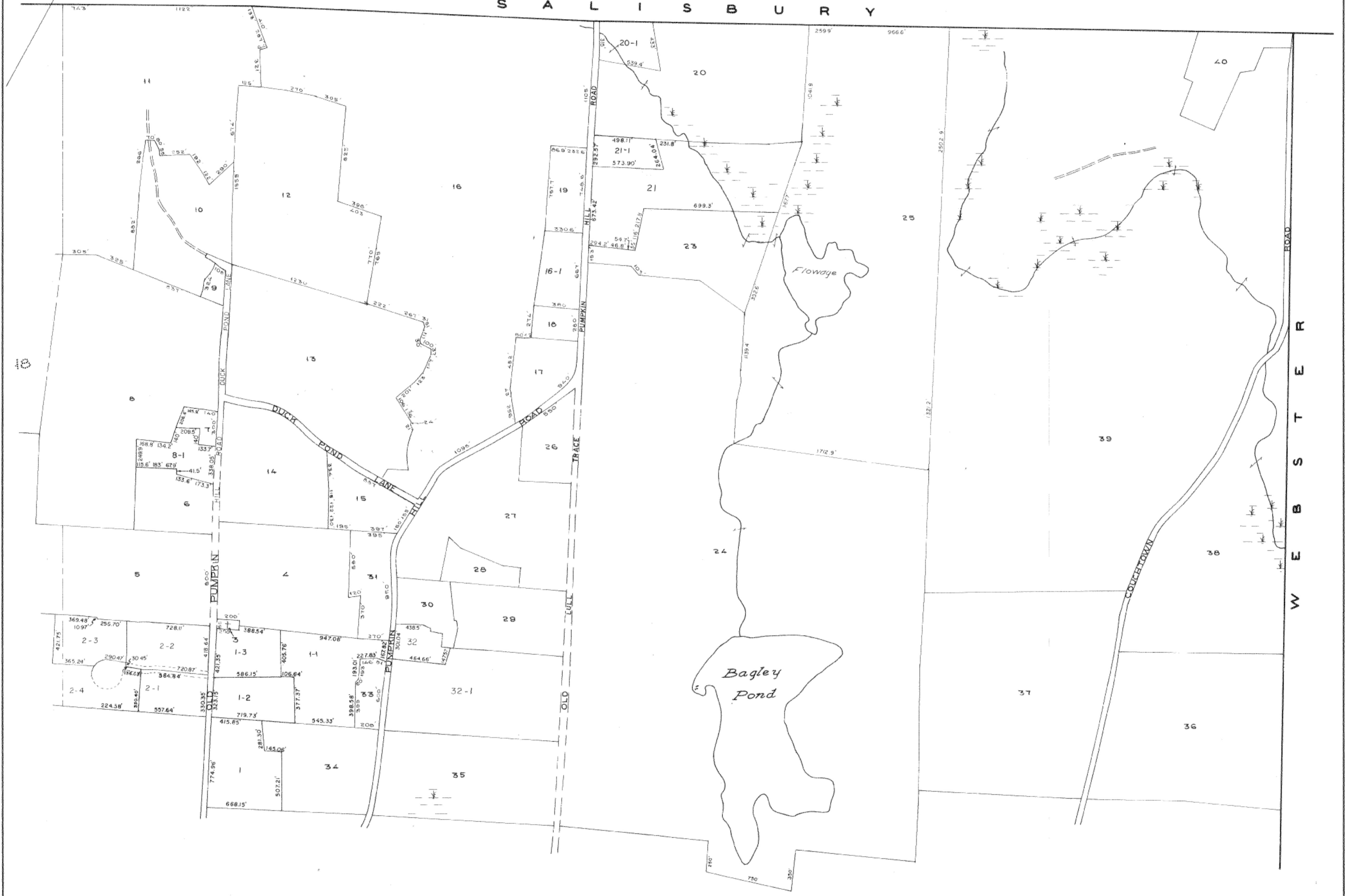


S A L I S B U R Y



LEGEND
 PARCEL NUMBERS 1
 ADJACENT MAPS 2
 MATCH LINE 3

For Assessment Purposes
 Not to be used for Conveyances

PROPERTY MAP
TOWN OF WARNER
 MERRIMACK COUNTY, NEW HAMPSHIRE
 PREPARED BY
 JAMES W. SEWALL COMPANY OLD TOWN, MAINE

REVISED 2007