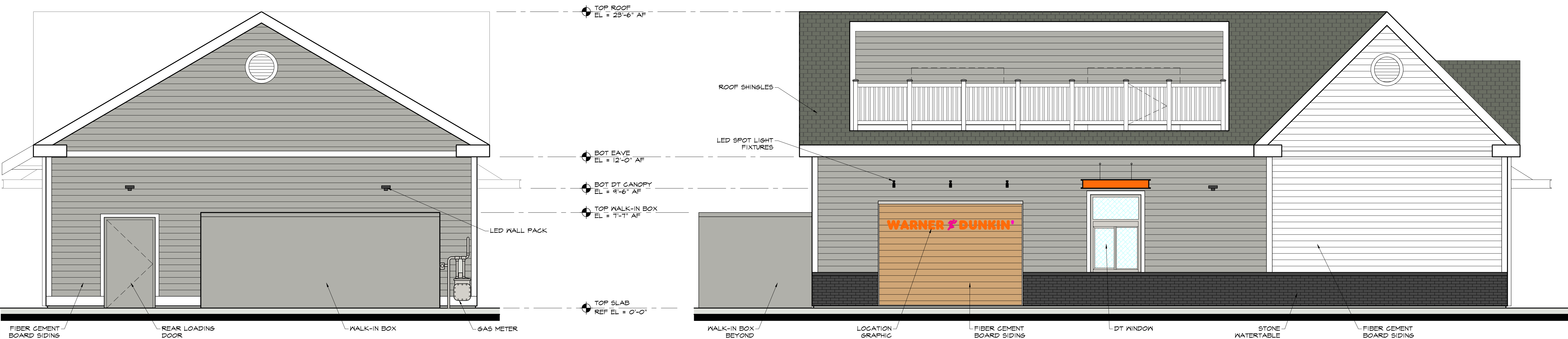


4 PROPOSED NORTH ELEVATION  
SCALE: 1/4" = 1'-0"

3 PROPOSED WEST ELEVATION  
SCALE: 1/4" = 1'-0"



2 PROPOSED SOUTH ELEVATION  
SCALE: 1/4" = 1'-0"

1 PROPOSED EAST ELEVATION  
SCALE: 1/4" = 1'-0"



**AHARONIAN  
& ASSOCIATES INC.**  
ARCHITECTS

310 George Washington Highway  
Suite 100  
Smithfield, Rhode Island  
0 2 9 1 7  
T 4 0 1 - 2 3 2 - 5 0 1 0  
F 4 0 1 - 2 3 2 - 5 0 8 0  
WWW.ARCH-ENG.COM

REVISIONS		
NUMBER	REMARKS	DATE

**FOR REVIEW**

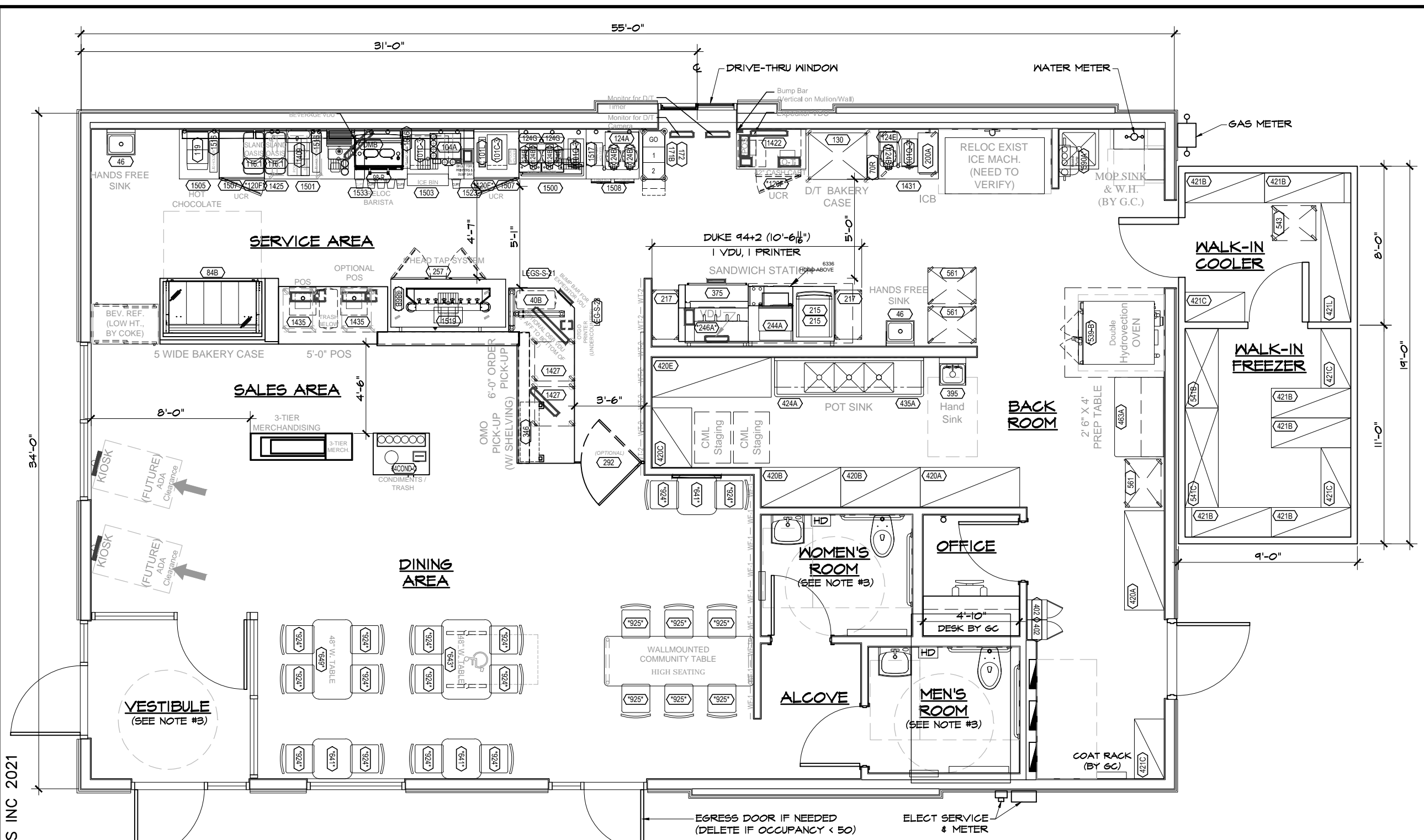
PROJECT TITLE  
  
  
 PC# NEW

ROUTE 103 WEST  
WARNER, NH  
MERRIMACK COUNTY

DRAWING TITLE  
**PROPOSED  
FLOOR PLAN**

DATE FEB 08, 2021	PROJ NO 20066
DRAWN BY JB	CHECKED BY ECM

DRAWING NUMBER  
**K1.1**



© AHARONIAN & ASSOCIATES INC 2021

▭ = VIDEO DISPLAY UNIT  
 □ = PRINTER  
 □ (opt.) = PRINTER (opt.)

1,874 SF Total  
 2 DRY DELIVERIES per WK.  
 2 REF'D DELIVERIES per WK.  
 20 SEATS  
 30 LF Dry Storage Shelving

0 5 10'

- NOTES:**
- THIS LAYOUT MEETS "GSD" STANDARDS.
  - FRANCHISEE'S ARCHITECT SHALL ENSURE 40" MINIMUM CLEAR ACCESS INTO AND THROUGHOUT THE STORE FOR DELIVERY OF LARGE EQUIPMENT ITEMS.
  - FRANCHISEE'S ARCHITECT TO VERIFY COMPLIANCE WITH APPLICABLE ADA AND CODE REQUIREMENTS FOR RESTROOM(S) AND ENTRANCE(S).
  - WINDOWS TO BE INFILLED, TINTED, OR BLOCKED OUT WITH TAP PROVED BY WINDOW GRANITROO.
  - UNSIGTLTY UTILITIES:  
TO ENHANCE THE D/T EXPERIENCE PLAN ACCORDINGLY TO EITHER REMOVE OR SCREEN WHEN POSSIBLE.
  - DEFAULT WATER FILTRATION SYSTEM SHOWN. ARCHITECT TO HAVE WATER TESTED TO VERIFY ACTUAL SYSTEM REQUIRED. BOOSTER PUMP CAN BE ELIMINATED IF INCOMING WATER PRESSURE TO THE BUILDING IS 65PSI OR HIGHER.
  - DEFAULT EQUIPMENT FOOTPRINT SHOWN. ARCHITECT TO COORDINATE WITH FRANCHISEE TO DETERMINE ACTUAL EQUIPMENT REQUIRED.


**PROPOSED FLOOR PLAN**  
 SCALE: 3/16" = 1'-0"  
